

## **SECTION 5**

### **PROPOSED EAST BOLDON FORUM: REPORT ON EQUALITY AND DIVERSITY**

#### **Introduction**

To comply with the Town and Country Planning Act 1990 (as amended by the Localism Act 2011), a neighbourhood forum is required to meet certain conditions, including that its membership includes a minimum of 21 individuals each of whom:

- lives in the neighbourhood area concerned, works there (whether for a business carried on there or otherwise), or
- is an elected member of a county council, district council or London borough council any of whose area falls within the neighbourhood area concerned.

In addition, local planning authorities must have regard to the desirability of designating the forum organisation or body:

- that has taken reasonable steps to secure membership that includes at least one person from each of the three membership groups identified,
- that has membership drawn from different places in the area and different sections of the community in the area.

This report explains the current membership of the proposed East Boldon Forum according to six factors: membership type, location, age, gender, ethnicity and disability. It also shows the representativeness of membership by comparing these factors to the overall population of East Boldon.

#### **Data Collection**

Membership of the East Boldon Forum (EBF) is open to everyone living or working in East Boldon, or those who are elected members for the East Boldon and Cleadon area. Members complete a membership form, which collects contact data and membership type (resident, working, or both, or councillor).

Forum members were asked to complete membership forms that included questions on membership type, age, gender, ethnicity and disability. Ninety one forum members completed the form and the data has been used to inform this report. This primary data can be found at appendix 1.

Baseline secondary data has also been collected from the 2011 census and Mid-year population estimates 2015, ONS. The secondary data has been collated using the Lower Super Output Areas for the East Boldon area which broadly aligns with proposed East Boldon neighbourhood boundary. The secondary data can be found at appendix 2.

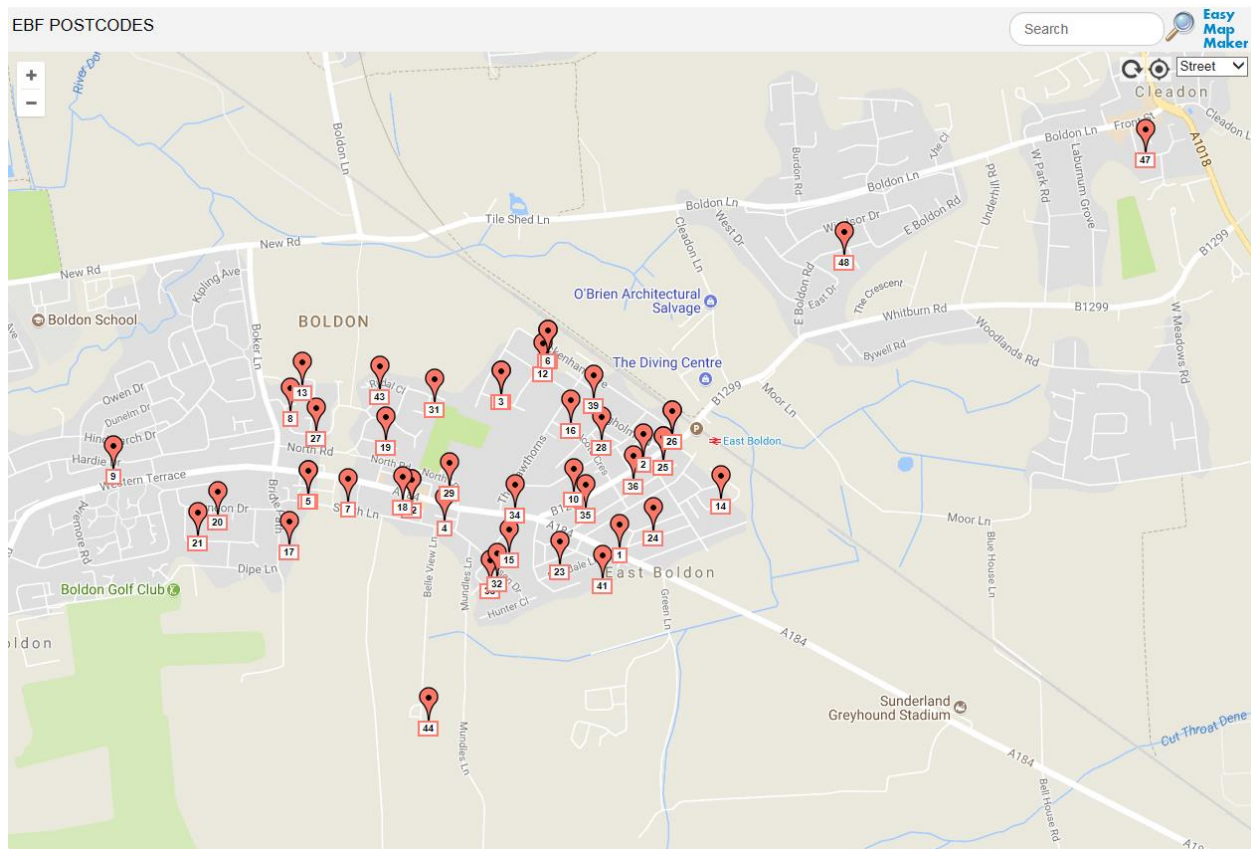
## **RESULTS**

### **Membership Type**

The proposed East Boldon Forum currently has 91 members. Of those 88 live in East Boldon, 1 lives and work in East Boldon and 2 are local Councillors for the East Boldon and Cleadon ward. Therefore all three membership types are represented in the proposed East Boldon Forum.

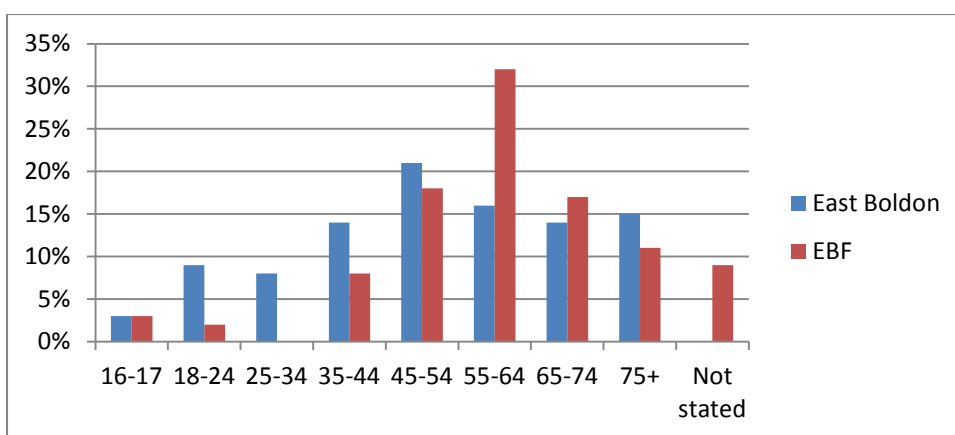
## Location of members within East Boldon

The map below shows an evenly distributed geographical spread of members in the proposed East Boldon neighbourhood boundary. The members shown outside of the proposed neighbourhood boundary are local Councillors for the Cleadon and East Boldon ward who live in Cleadon and a member who works in East Boldon but lives in West Boldon.



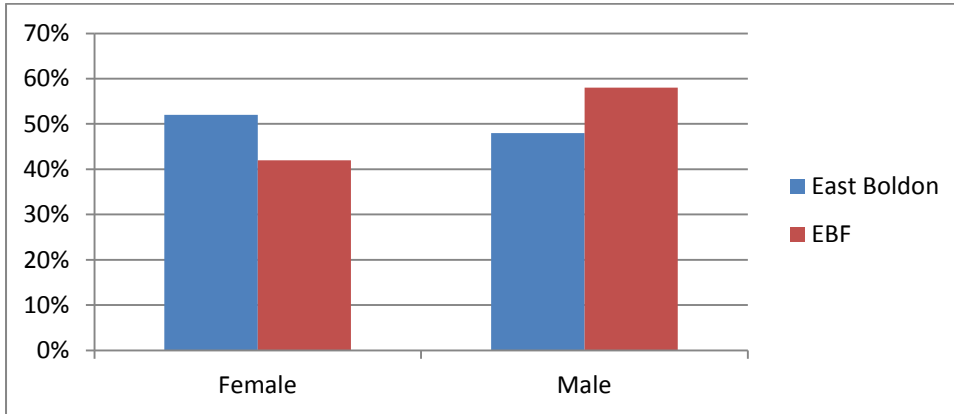
## Age

Age groups in East Boldon and the proposed East Boldon Neighbourhood boundary.



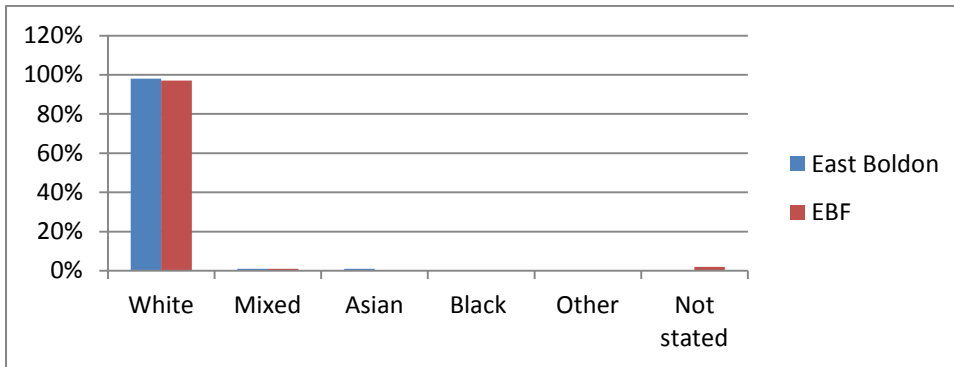
## Gender

Gender in East Boldon and the East Boldon neighbourhood boundary.



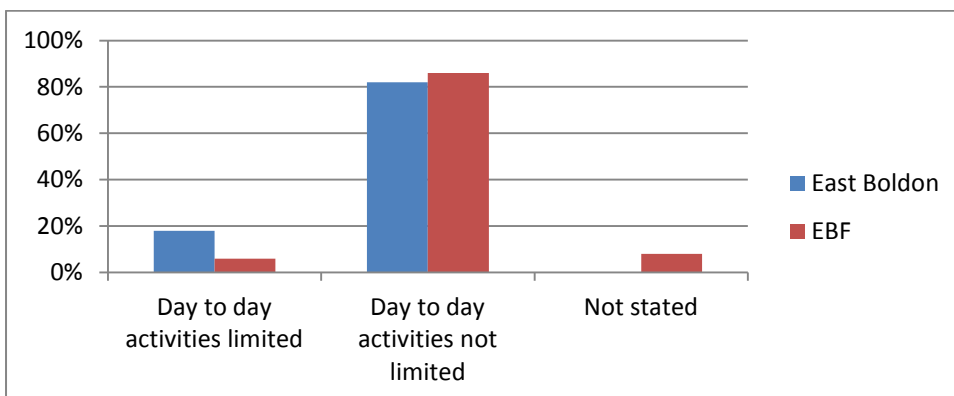
## Ethnicity

Ethnicity in East Boldon and the East Boldon neighbourhood boundary.



## Disability

Disability in East Boldon and the East Boldon neighbourhood boundary.



## Conclusion

It is demonstrated above the proposed East Boldon Forum membership is representative of the East Boldon area. The proposed forum has:

- more than 21 members from each of the membership types;
- an evenly distributed geographical spread of members;
- a representative from each section of the community.

## APPENDIX 1: Proposed East Boldon Forum Equality and Diversity Primary Data

All data valid as of 07-Sept-17

Data collected through completion of the East Boldon Membership Form

Total Members: 91

### Membership type

Resident of East Boldon	Work in East Boldon	Both	Councillor
88	0	1	2
97%	0%	1%	2%
<b>TOTAL: 91</b>			

### Age

16-17	18-24	25-34	35-44	45-54	55-64	65-74	75+	Not stated
3	2	0	7	16	29	16	10	8
3%	2%	0%	8%	18%	32%	17%	11%	9%
<b>TOTAL:91</b>								

## Gender

Female	Male
38	53
42%	58%
<b>TOTAL: 91</b>	

## Ethnic Origin

White	Mixed	Asian	Black	Other	Not stated
88	1				2
97%	1%				2%
<b>TOTAL: 91</b>					

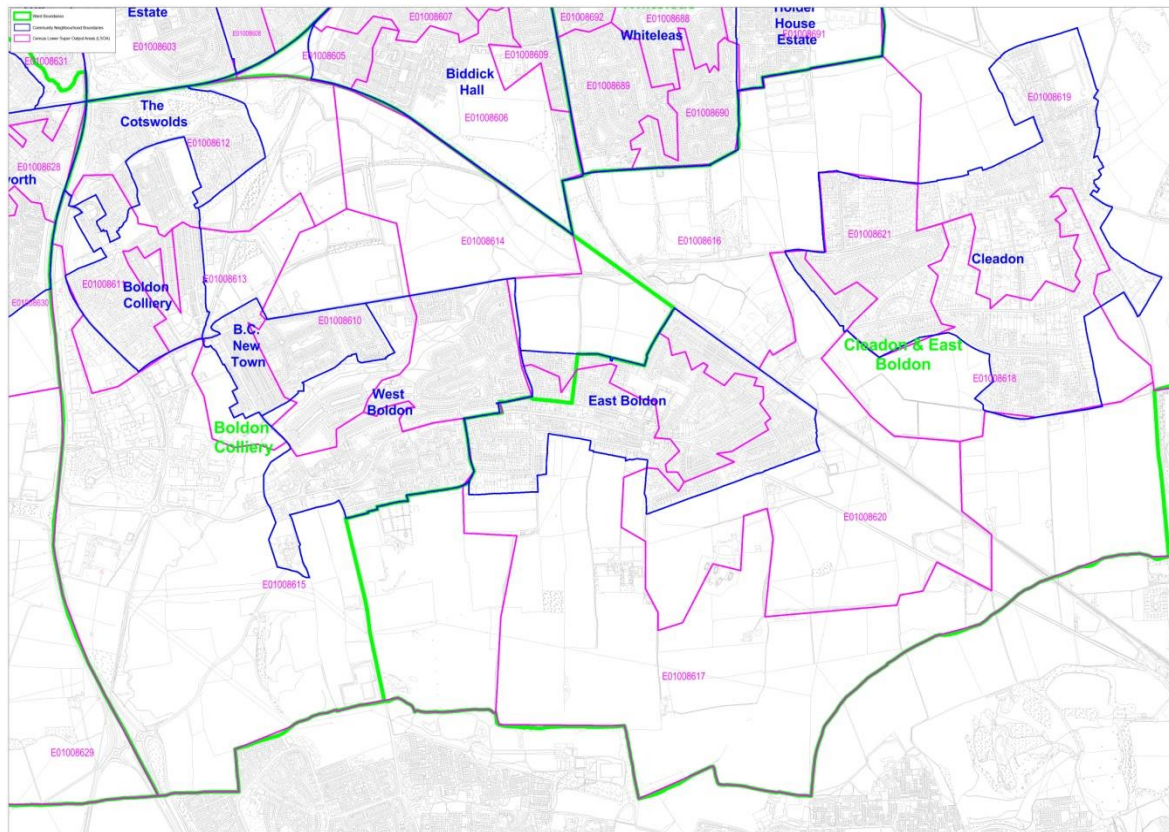
## Disability

Yes	No	Not stated
6	78	7
6%	86%	8%
<b>TOTAL: 91</b>		

## APPENDIX 2: East Boldon Forum Equality and Diversity Secondary Data

The baseline statistical information has been collated using the Lower Super Output Areas for the East Boldon area which is mainly covered by:

- E01008616
- E01008617
- E01008620



### Age, East Boldon

Lower super output areas	Total Population	16 - 17	18-24	25-34	35-44	45-54	55-64	65-74	75+
E01008616	1501	38	99	115	195	293	202	152	147
E01008617	1522	44	140	86	153	255	232	188	187
E01008616	1436	35	83	107	192	216	161	176	246
<b>Total</b>	<b>4459</b>	<b>117</b>	<b>322</b>	<b>308</b>	<b>540</b>	<b>764</b>	<b>595</b>	<b>516</b>	<b>580</b>
<b>%</b>		<b>3%</b>	<b>9%</b>	<b>8%</b>	<b>14%</b>	<b>21%</b>	<b>16%</b>	<b>14%</b>	<b>15%</b>

Data Source: Mid-year population estimates 2015, ONS

### Gender, East Boldon

Lower super output areas	Female	Male
E01008616	795	706
E01008617	769	753
E01008616	775	661
<b>Total</b>	<b>2,339</b>	<b>2,120</b>
	<b>52%</b>	<b>48%</b>

Data source: Census 2011 ONS

### Ethnicity, East Boldon

Lower super output areas	White	Mixed	Asian	Black	Other
E01008616	1543	6	19	0	2
E01008617	1437	10	25	3	7
E01008616	1419	13	14	2	1
<b>Total</b>	<b>4399</b>	<b>29</b>	<b>58</b>	<b>5</b>	<b>10</b>
	<b>98%</b>	<b>1%</b>	<b>1%</b>	<b>0%</b>	<b>%0</b>

Data source: Census 2011 ONS

### Disability, East Boldon

Lower super output areas	Day to day activities limited	Day to day activities not limited
E01008616	246	1324
E01008617	240	1242
E01008616	312	1137
<b>Total</b>	<b>798</b>	<b>3703</b>
	<b>18%</b>	<b>82%</b>

Data source: Census 2011 ONS