

# Coastal Designation Justification 2022



## SOUTH TYNESIDE LOCAL PLAN- JUSTIFICATION FOR EXTENDING THE HIGH LANDSCAPE VALUE BOUNDARY SOUTHWARDS ON THE SOUTH TYNESIDE COAST

- 1.1 This paper provides evidence to support the extension of The Coast: Area of High Landscape Value as proposed in the draft Local Plan (2022). The justification has been provided by the Council's Senior Landscape Architect in 2019.
- 1.2 The [South Tyneside Landscape Character Study Part 3 \(2012\)](#) argued the case for the original area of High Landscape Value along the coastline. The area of coast originally recommended for inclusion in the landscape designation ran from Trow Point to Whitburn Coastal Park (See Fig.1). The southern boundary has been drawn to include Whitburn Coastal Park and followed the edge of the Shearwater housing estate. However, the boundary was drawn to exclude the coastline further south.
- 1.3 The Council feel that there is merit in extending the candidate Coast Area of High Landscape Value and that there is justification for the area south of Whitburn Coastal Park to City of Sunderland Boundary being included this within the proposed designation. Therefore, the Council proposes that this boundary should be amended to extend southwards following the coastline to the boundary with City of Sunderland.

### JUSTIFICATION AND EVIDENCE: COAST AREA OF HIGH LANDSCAPE VALUE

- 1.4 The coastal corridor between Whitburn Coastal Park and the City of Sunderland boundary becomes quite narrow in areas as it extends south through Whitburn, however the same essential character is present throughout. The expansive views north, south and out to sea are the outstanding feature of this character area, along with the limestone cliffs and outcrops. The same recreational activities are carried out as further north, which includes the coastal path along the grassy clifftops.
- 1.5 The natural boundary of the proposed designation to the north is at Trow Point where the coastline does become much more of a built up, and urban character but consideration should be given to extending the boundary of the High Landscape Value southwards.
- 1.6 Using the same approach as detailed in the South Tyneside Landscape Character Study Part 3, the tables below provide justification for the amendment of the boundary to include this area as High Landscape Value.

<b>Table 1. The Coast Candidate Area of High Landscape Value: Justification and Evidence</b>		
<b>Aspects of Landscape Character</b>		
<b>Aspects of Landscape Character</b>	<b>Definition</b>	<b>Justification for extended boundary</b>
Typicality	Elements of landscape character which are particularly common within the assessment area as a whole.	Limestone outcrops continue along this stretch of coast and distinctive of the underlying Magnesian limestone and lend a sense of place to the area.
Rarity	Particular aspects of landscape character which are rare or unique in the area.	The limestone cliffs have rarity value in the context of South Tyneside and in the wider area.
Condition	The degree to which individual characteristics of landscape character are in a good state of repair or health.	Coastal areas are considered to be in particularly good condition.
<b>Landscape Qualities</b>		
<b>Landscape Qualities</b>	<b>Definition</b>	<b>Justification for extended boundary</b>
Scenic	Aspects of the landscape and our reaction to it which contribute to its natural beauty and aesthetic appreciation.	The coastline continues to be unquestionably scenic, with a strong contrast between the steep cliffs, the grassy cliff tops and the adjacent urban areas. The cliffs offer attractive views across Whitburn Bay to the south.
Enjoyment	Aspects of the landscape and our reactions to it which contribute to its potential for reaction and amenity.	Key footpaths include the coastal walkway that continues all the way down to Whitburn.
Cultural	Aspects of the landscape and our reactions to it which contribute to the understanding of its historic character and the wider cultural record.	Cultural heritage most obviously contributes to the landscape in the form of historic mineral workings, as represented by old limestone quarries, limekilns, and the restored colliery sites.

<p>Naturalness</p>	<p>Aspects of the landscape and our reactions to it which contribute to naturalness.</p>	<p>All areas of South Tyneside are strongly man-modified, and no parts of the borough are far from a built up area. Naturalness has been considered with reference to the Biodiversity Assessment carried out by the Council in 2011. This classed all open land within the borough into areas of very high, high, medium and low biodiversity value.</p> <p>Locations within the study area with the greatest concentration of high and very high value include the coastal strip.</p>
--------------------	--	---

**Fig 1. Candidate Areas of High Landscape Value – Landscape Character Study 2012**

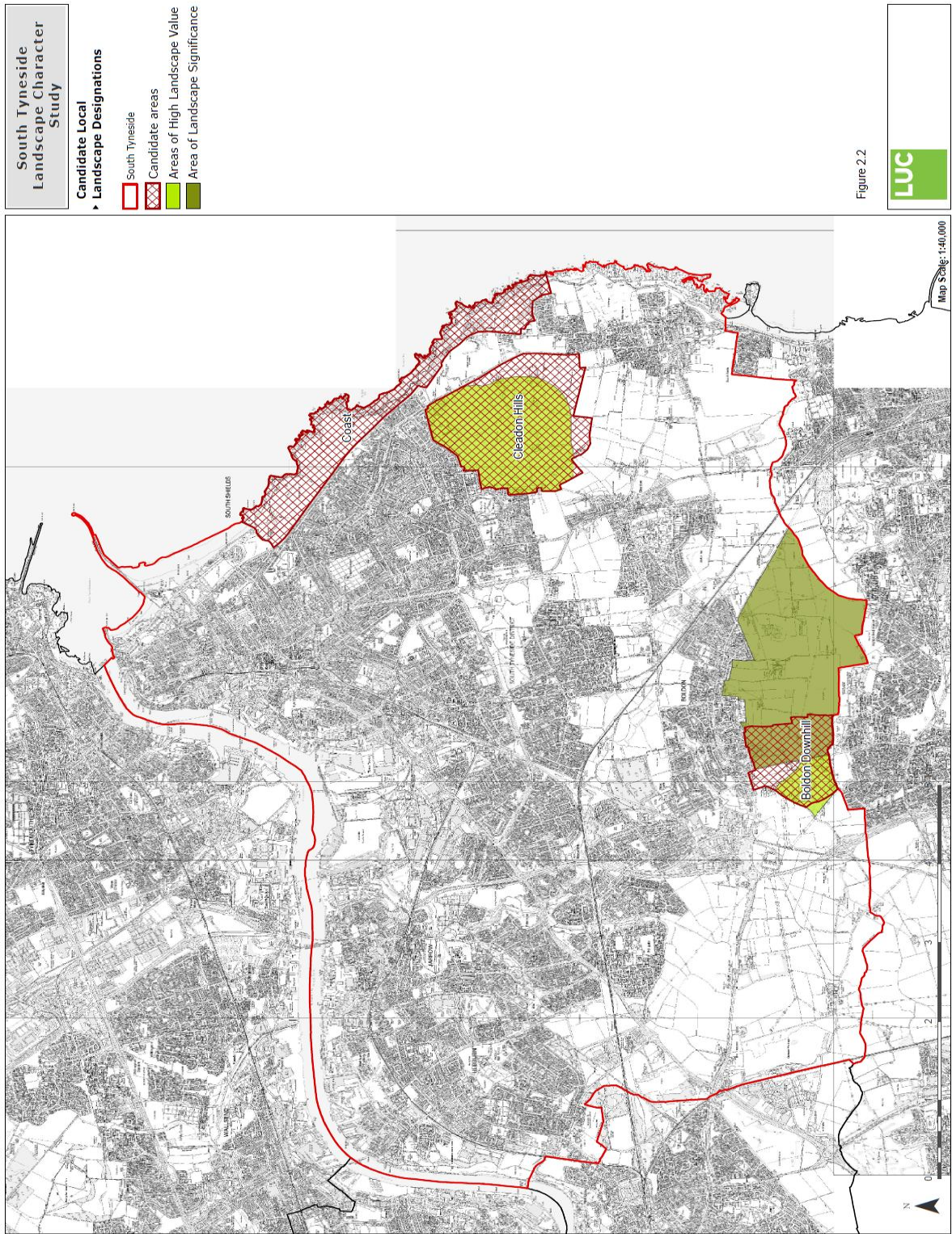


Figure 2.2



**Fig 2. Proposed Coast Area of High Landscape Value**

